

COMPANY PROFILE



وسمي القابضة
WASMI HOLDING



CONTENTS

About Us	01
Mission & Vision	02
The Company	03
Expertise	04
Services	05
Our Fleet	11
Rental Equipment	12
Health & Safety Environment	14
Organogram	15
Our Clients	16
Completed & Ongoing Projects	17
Certifications	18
Picture Gallery	19



مصري القابضة
WASMI HOLDING



About Us

The company was established in 1975 by Wasmi Hamad Al Khaleeb and group of highly skilled employees with years of on hand experience for the sole purpose of forming a small and highly skilled rental equipment company. The company was named Wasmi Holding in 2012 which allowed for the increase in the unique services that can be offered. We are always available with the necessary skills, knowledge and equipment to meet any requirement in the field of general construction, civil construction, mechanical construction and rental equipment. Safe working conditions are a very high priority to us not only for our employees, but also for our customers.

The company aims to become a leading infrastructure development company in Kingdom of Saudi Arabia, a national player who safely, profitably and sustainably delivers best-in-class integrated services, products and solutions to meet our customers' needs".

As a construction company working on some of the KSA's most important projects, quality of delivery is a priority.

The Wasmi Holding's quality management system spans all phases of the project life cycle, from preliminary feasibility analysis and concept development through to final commissioning of the project. Meeting the systems objectives requires a clear understanding of the qualitative and quantitative principles of management, costings, programme and delivery as applied to each project.

Mission & Vision

Mission

"Our mission is to remain reliable and efficient at the forefront of the Saudian construction and rental equipment industry through quality, honesty, and hard work".

Vision

Our goal and concern is to provide reliable value added construction services by adding innovation and providing state of the art equipment to our customers and become dynamic leaders committed to quality and excellence through services.



مشمى القابضة
WASMI HOLDING

The Company

Wasmi Holding is one of the leading construction and rental Equipment Company of Kingdom of Saudi Arabia and works in close collaboration with oil and gas industry worldwide to provide integrated pipeline construction, road construction machine maintenance and rental equipment. The company has approximately 1,000 people providing the industry's widest range of services.

The company comprises of the following business segments:

- Wasmi Holding supplies a wide range of services from pipeline construction, integration and protection through civil engineers and professionals, well cementing and stimulation, well completed projects that helps in efficient operational processes.
- The second segment addresses rental equipment and its maintenance.
- The company also provides the facility of road and tower construction.

While our projects like others across the industry need to maintain a focus on cost and value for our clients, the Wasmi Holding has a very strong emphasis on achieving these aims while still maintaining high quality delivery across all its companies and projects.



Expertise

S.No	Team	Number
01	Engineer	11
02	Supervisor	18
03	Inspectors	15
04	Surveyors	16
05	General foreman	40
06	Steel fixer	18
07	Carpenters	12
08	Plumbers	18
09	Electricians	6
10	Mason	21
11	Store keeper	11
12	Structural steel erectors	12
13	Operator / Driver	24
14	Helpers	20
15	Labor	30
16	Welder	25
17	Pipefitter	15
18	Operator	130
19	Driver	128
20	Side boom operator	12

Services

Oil Pipeline

At Wasmi Holding, we offer a unique set of pipeline services unmatched anywhere in the oil & gas industry. We can provide pipeline construction, integrity service, subcontractor management, and labour resource management.

Pipeline Construction

We are experienced in the construction of pipelines ranging from small to large pipelines including mainline cross country construction utilizing mechanized or manual welding methods in a variety of geographic terrains. Wasmi holding's current capacity includes mainline spreads of modern pipeline construction equipment. We can also provide qualified inside plant construction, handling above and underground piping in etc.

The pipeline construction services provided by us include:

- Welding and weld repairs
- Cold Bending
- NDT Testing
- Painting, Blasting, Coating and holiday testing
- Tie-in welds
- Site preparation, including Excavation
- Backfilling.
- Padding, lowering, backfilling, compacting, forming, berm and crude oil stabilization of the berm
- Fabrication and installation of signage
- Hydrotesting

Pipeline Integrity Service

Wasmi Holding Company providing maintenance, rehabilitation and installation of piping and facilities services to the oil and gas transmission industry. We offer customers the following pipeline integrity services:

- Investigative digs
- Hydrostatic retests
- Corrosion remediation
- Leak repair
- Replacement
- Pipeline replacement and construction, and
- Pipeline cleaning

At Wasmi Holding, we know that improvement comes with the diligent evaluation and improvement of our work methods. Through the elimination of waste, rework and redundancy, we strive for excellence in every aspect of our performance.

Road Construction

Wasmi Holding Company strives to give the world the safest highways by designing construction of roads and quality pavement marking. The public, driving on the roads today, deserve and expect to have the best infrastructure possible. As we look to the future highway systems of the world, we realize that only with innovative products will there be an economical way for governments to supply the needs of ever growing road systems and increasing traffic on them. The driving public, no matter what age, relies on road markings to create a safe driving experience.

Our services include all aspects of Road and Highway Construction for the public sector as well as large parking areas and airport runways for the private sector. A sampling of our wide range of services includes:

- Roads and Highways (new construction and rehabilitation).
- Bridges, Culverts, & Concrete Pavement Structures.
- Entranceways & Parking Lots.
- Curbs, Traffic Islands, Sidewalks, and Retaining Walls.
- Underground Sewers Drainage System.

Tower Construction

Wasmi holding has been into the wireless telecommunication construction industry since its early days, contributing to its rapid growth. As the demanding industry continues to grow and evolve, we value the history we have with our partners and clients allowing us to continuously work with not only industry leaders, but friends. Our work and experience expands from site-development and construction, to maintenance and inspection of pre-existing sites.

We will continue to value our clients and uphold our superior level of quality and efficiency for every project. Our capabilities, experience and credibility makes the company preferred by many industry leaders and communities alike. The company provides turnkey construction services for the telecommunications and broadcast industries.

Machine Maintenance

Machine tool repair and maintenance services offering preventive maintenance and emergency programs, contract maintenance, used machinery inspection and evaluations, troubleshooting, and recommendations. Services include tool leveling and alignment, way and spindle taper grinding, calibration, and hydraulic and lubrication system upgrade with various specifications and capacities. Also offers standard precision tooling and contract precision machining.

We specialize in machine inspection for periodical & remedial maintenance. We have the necessary tools, equipment and expertise to rebuild and aid in repair of all kinds of equipment as required by our customers. Our team of experience has extensive knowledge and know-how to provide solutions to your equipment dismantling and assembly needs.

Transport & Rental Equipment Division

Wasmi Holding's Equipment Rental fleet is one of the strongest in the industry. In order to initially serve the diverse requirements of industrial & pipeline contracting Wasmi holding has built up a wide ranging fleet of heavy construction equipment. Our product line includes everything from small hand held tools to large earthmovers. While having a wide variety of tools and equipment is important, making sure they are all operating correctly is most important.

We understand that our fleet is the cornerstone of our business and we stand behind the quality equipment we rent. We begin by purchasing factory new equipment from the industry's leading manufacturers for our rental fleet. The intelligently customized solutions are backed by meticulous maintenance packages ensuring our clients project execution is never put at risk. Below listed are some of the main heavy equipment we have in our fleet.





مؤسسة القابضة
WASMI HOLDING

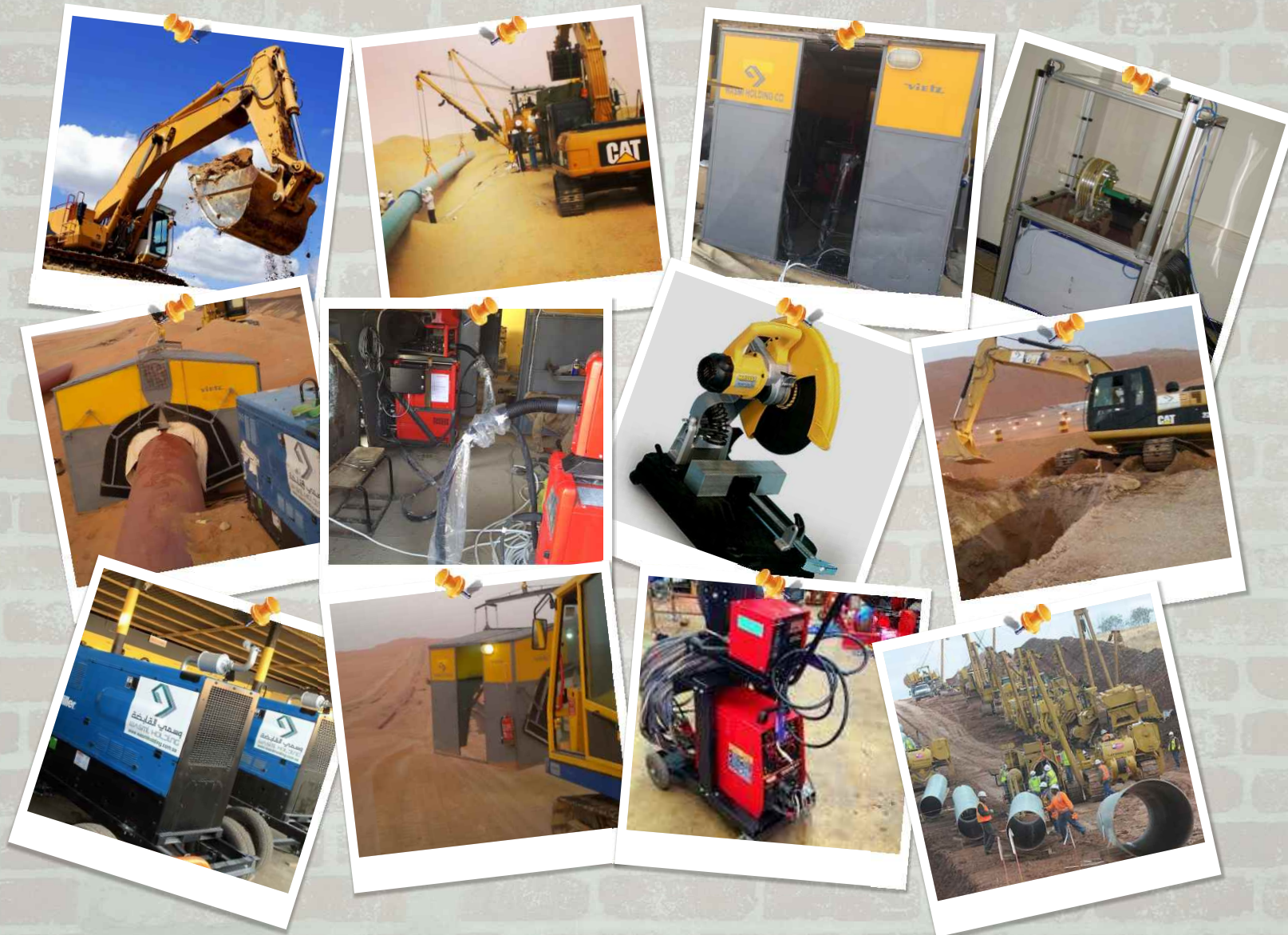
Our Fleet

S.No	Vehicle Type	Number
1	Sedan Car	35
2	Pickup	18
3	Bus (15 Seats)	17
4	Bus (25 Seats)	10
5	Excavator	35
6	Loader	16
7	Roller Compactor	12
8	Plate Compactor	4
9	Dozer	51
10	Crane	4
11	Dump Truck	45
12	Water Tanker	24
13	Grader	12
14	Flat Bed	20
15	Low Bed Hydraulic	12
16	Trailer	25
17	Electric Generator	16
18	Truck	19
19	Boom Truck 5T & 10T	21
20	Side Boom	12

RENTAL EQUIPMENT



مصري القابضة
WASMI HOLDING



Maintenance

Maintenance is a very important factor in equipment safety, but it is not the only one. Providing the right equipment for the job, safety training, and manufacturer's safety & instruction manuals is also crucial. Many of our locations also carry a full line of personal and jobsite safety accessories.

We provide daily, weekly, monthly and long-term rentals, tools and supplies. From multi-billion dollar corporate endeavors to weekend homeowner projects, we're ready to help with quality equipment and top-level service. We can even customize a rental program suited exclusively to meet your needs.

We continue to provide you, our customer a premier rental experience each and every time and in turn, have become your equipment rental company of choice.

Health Safety and Environment

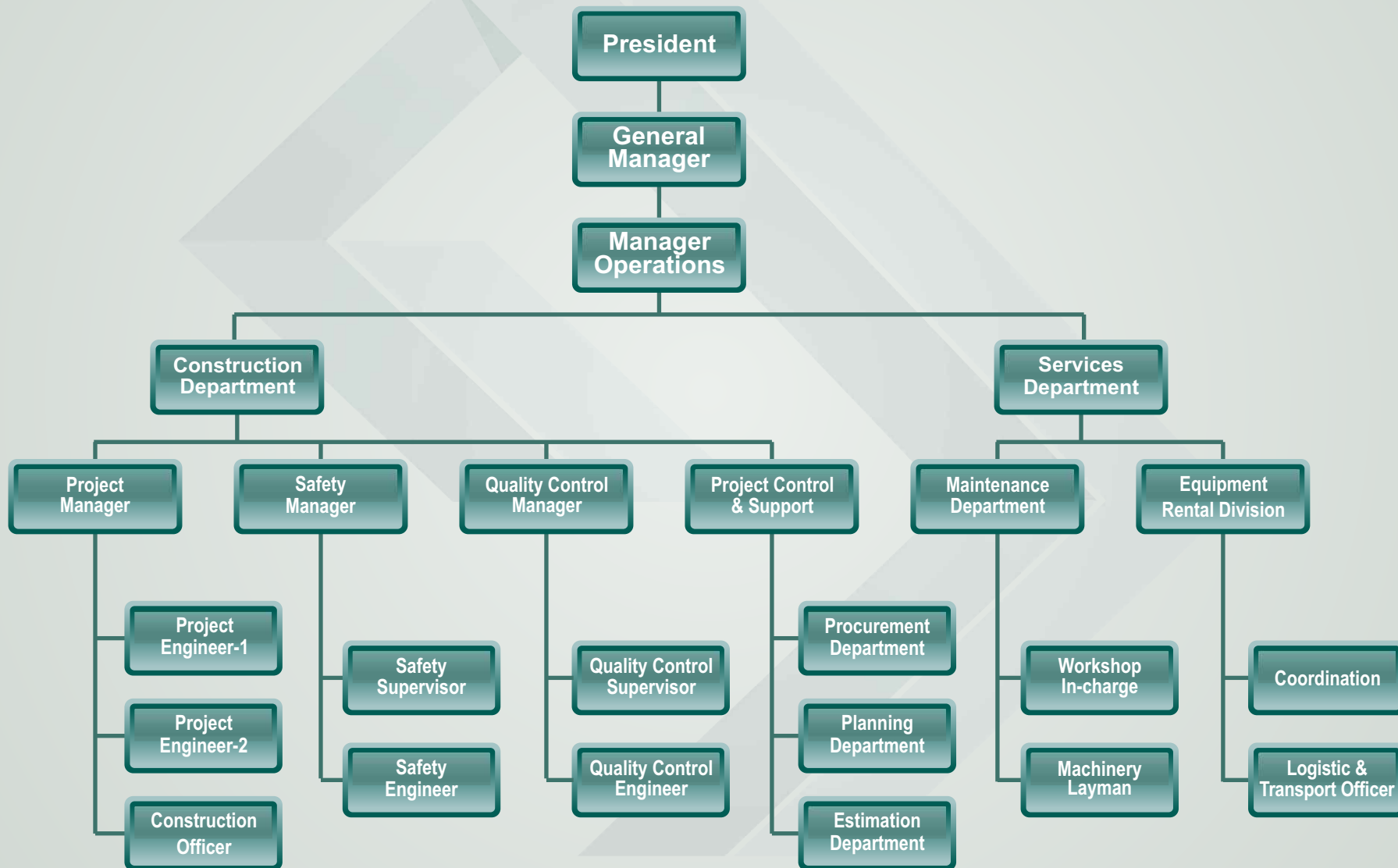
It is the policy of Wasmi Holding to comply fully with all applicable laws and regulations concerning construction activities on campus. We have Safety Plans that are adequate to protect the safety of people and property within the construction site and the surrounding area.

Wasmi Holding operates and is committed to a behavioral safety programs. Our intent is to change the culture at a 'hearts and minds' level and to nurture human responses within our workforce to keeping themselves and others safe. We continue to challenge ourselves with SMART targets shared across the Company, the outcomes of which are validated by precise measurement. Our benchmark continues to be fewer lost-time injuries, lower environmental impact, a positive legacy for the communities in which we work and it remains of vital importance to us to send each of our employees home safely every evening.

Our primary aim is maintaining and further developing a first class safety culture. The Company is fully committed to the prevention of accidents, injuries and ill health. One of the key objectives is to ensure continual improvement to reduce accidents, ill health and incidents. Wasmi Holding remains focused on developing a positive and proactive health and safety culture, not only for our own people, but also for our suppliers and sub-contractors.



Organogram of Wasmi Holding



Our Clients



PROJECTS



Completed Projects



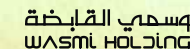
WesternGeco Project: Pipeline construction project Start Date: June 1 st , 2007	DCL/Saudi Aramco Project: Design and construction of communication link, tower and associated facilities at Al- Uqair beach Start Date: December 1 st , 2013 Completion Date: May 28 th , 2014	ARGAS Project: Equipment rental & services Start Date: Sept 1 st , 2010
ARGAS Project : Civil Works Drilling Project Start Date: May 28 th , 2011	Makamin Petroleum Project: Construction of PDHMS and E&I for 8 HWYH and HRDH wells, SSV/SSV surface panels installation for 13 UTMN wells Start Date: Dec 13 th , 2011 Completion Date: June 30 th , 2014	Sinopec Project: Equipment Rental & Services Start Date: Aug 19 th , 2009
Makamin Petroleum Project: Installation of four water injection centrifugal pumps in Abqaiq area Start Date: Sept 20 th , 2011 Completion Date: Sept 10 th , 2014	Rajeh H.Al- Marri & Sons Company Project: Shaybah NGL Projects Start Date: Aug 1 st , 2014 Completion Date: Nov 1 st , 2014	



On-Going Projects



Saudi Aramco Project: Remaining Works for GOSP-2 Pipeline Shaybah Interconnecting Pipelines	Kentz/Saudi Aramco Project: Remaining Works for GOSP-3 Pipeline Shaybah Interconnecting Pipelines
Saudi Aramco Project: Remaining Works for Pipelines Between NGL, GOSP-1 & GOSP-4 Including Valve Hydro Testing Shaybah Interconnecting Pipelines	



RAJEH H. AL-MARRI & SONS COMPANY
 FOR TRADING & GENERAL CONTRACTING
 SPECIALIZING ON OIL, GAS & WATER
 PIPELINE CONSTRUCTION & REHABILITATION

Plaque of Appreciation

is presented to

WASMI HOLDING COMPANY

In grateful recognition of its professionalism, hard work and outstanding performance in the successful completion as sub-contractor of Tie-In 36" Shaybah NGL Projects from August to November 2014

Given this 12th day of November 2014

AJH R. Al-Marri
 Chief Executive Officer
 RHM & Sons Company

RHM
 49999999 Saudi Arabia

شركة التوصيل الرقمي المحدودة

© 1971-1972 A&A TVS. - فاكس: +971-17- 6661171. - تليفون: +971-17- 6661171. - البريد الإلكتروني: info@ddc.com.sa
C. R. 2051054980 - P. O. Box 11270 - Al-Khobar 31952 - Saud Arabia - Tel: +966-13-8584674 - Fax: +966-13-8584678
E-mail: info@ddc.com.sa - موقع الإنترنت: Web Site: www.ddc.com.sa

2014

Wasm Holding

Wasm Holding

Thanks partners success

Wasm Holding

Waseed team volunteering honored to thank and gratitude
to your valuable contribution
to success the " My Health is My Happiness " event 2014 in AlOthaim Mall
and we wish your contribution in the future .

Waseed team volunteering.

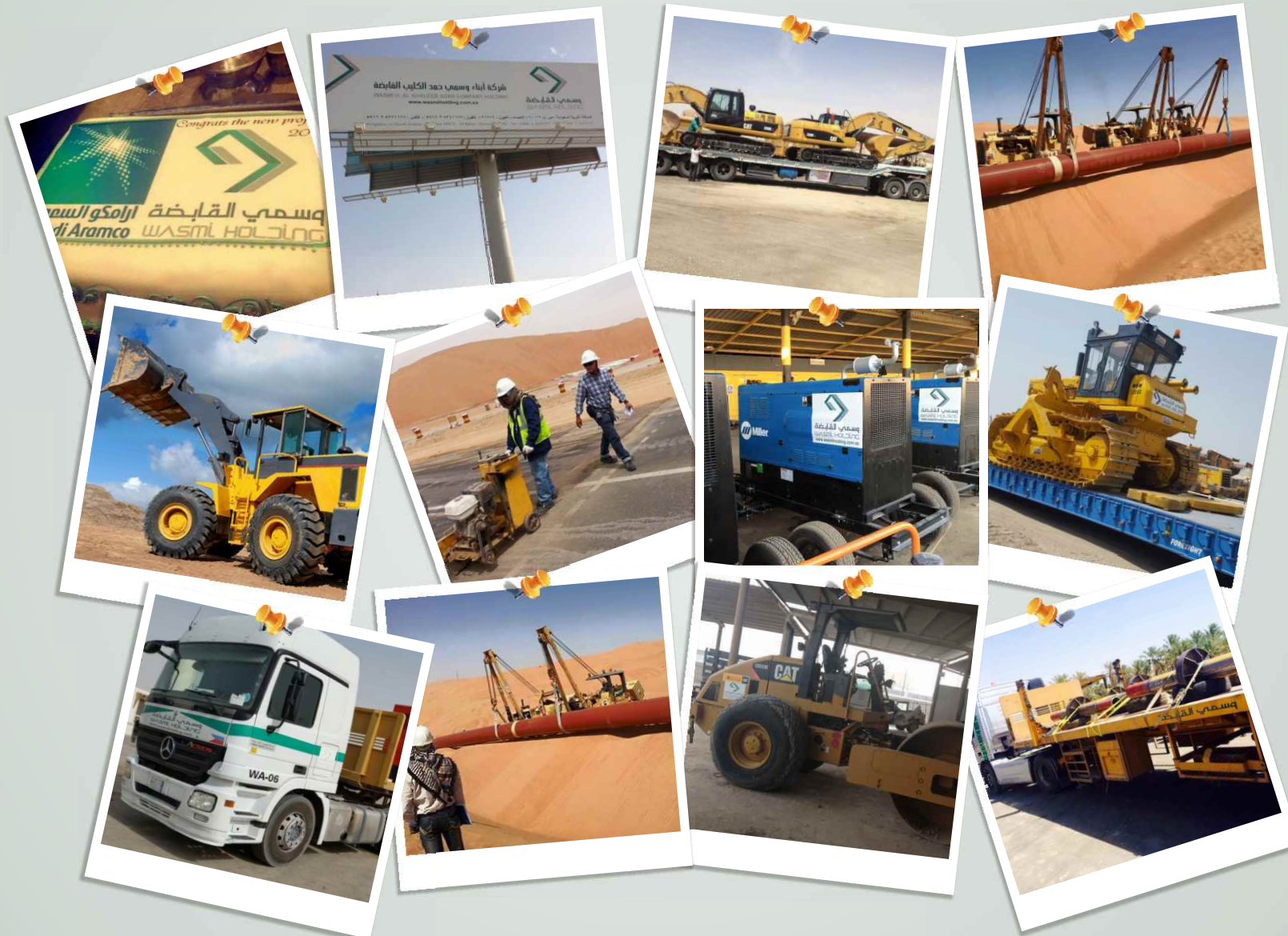
Al_hasa 1435.

Eng. Mohammad S. Al Abdalla
Administration, HR & Shared Services Manager

PICTURE GALLERY



مسمى القابضة
WASMI HOLDING







مستحق القابضة
WASMI HOLDING

WASMI HOLDING

P.O. Box 21000 AL Ahsa Oyouun- 31982

Kingdom of Saudi Arabia

Ph: +966 13 5341177 Fax: +966 13 5371177

info@wasmiholding.com.sa

www.wasmiholding.com.sa